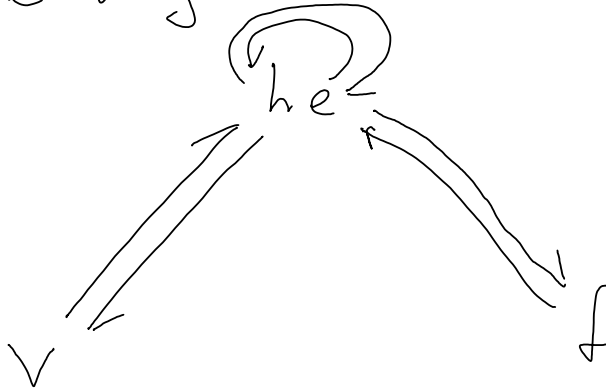


# Halfedge Data Structure

Tuesday, October 28, 2014 12:26 PM




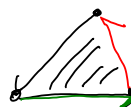
Weiler diagram



- start
- target
- structure
- step

getter:

Edge e:

- getTargetVertex 
- getLeftFace 
- getOppositeEdge 
- getNextEdge 

Face f:

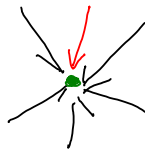
- getBoundaryEdge



(last linked to face)

Vertex v:

- getIncomingEdge



(-||-)

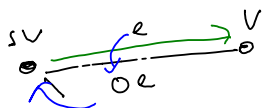
Setters:

Edge e:

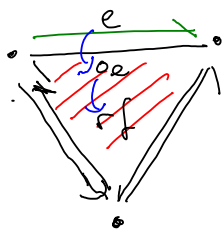
- setLeftFace
- setTargetVertex
- linkNextEdge

link Opposite Edge

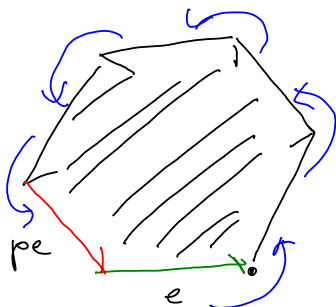
get Start Vertex sv



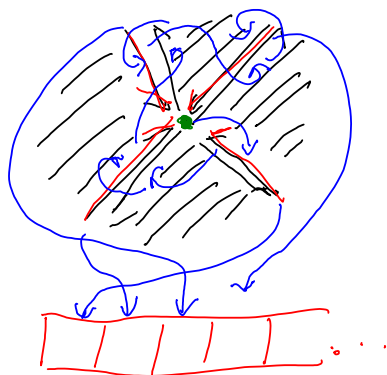
get Right Face rf



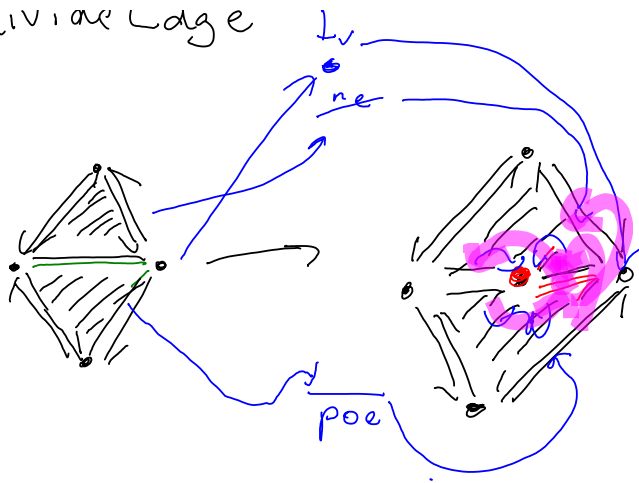
get Previous Edge pe



get Incoming Edges



o subdividing edge



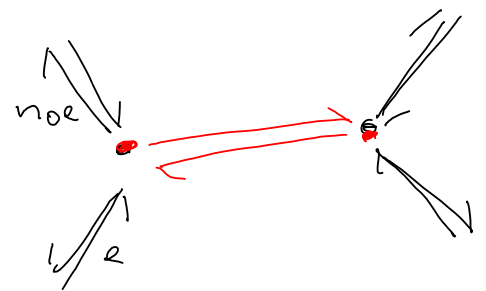
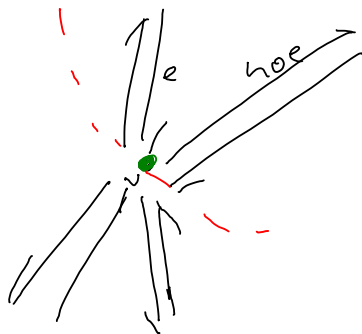
ne - new edge

tv - target vertex

poe - previous (opposite edge)

link edges

o split vertex



o v star

